

## Higher-Order Learning 2021

**62.6%**

of students believed that their coursework emphasised quite a bit/ very much applying facts, theories, or methods to practical problems or new situations

**56.3%**

of students believed that their coursework emphasised quite a bit/ very much analysing an idea, experience, or line of reasoning in depth by examining its parts

**58.7%**

of students believed that their coursework emphasised quite a bit/ very much evaluating a point of view, decision, or information source

**66.0%**

of students believed that their coursework emphasised quite a bit/ very much forming an understanding or new idea from various pieces of information

## Reflective and Integrative Learning 2021

**54.5%**

of students often/ very often combined ideas from different subjects / modules when completing assignments

**42.5%**

of students often/ very often connected their learning to problems or issues in society

**28.5%**

of students often/ very often included diverse perspectives (political, religious, racial/ ethnic, gender, etc.) in discussions or assignments

**47.5%**

students often/ very often examined the strengths and weaknesses of their own views on a topic or issue

**53.0%**

of students often/ very often tried to better understand someone else's views by imagining how an issue looks from their perspective

**58.5%**

students often/ very often learned something that changed the way they understand an issue or concept

**63.7%**

of students often/ very often connected ideas from their subjects / modules to their experiences and knowledge

## Quantitative Reasoning 2021

**33.0%**

of students often/ very often reached conclusions based on their analysis of numerical information (numbers, graphs, statistics, etc.)

**24.8%**

of students often/ very often used numerical information to examine a real-world problem or issue (unemployment, climate change, public health, etc.)

**19.5%**

of students often/ very often evaluated what others have concluded from numerical information



## Learning Strategies 2021

**51.9%**

of students often/ very often identified key information from recommended reading materials

**54.9%**

of students often/ very often reviewed their notes after class

**46.7%**

of students often/ very often summarised what they learned in class or from course materials

## Collaborative Learning 2021

**36.6%**

of students often/ very often asked another student to help them understand course material

**38.8%**

of students often/ very often explained course material to one or more students

**31.8%**

of students often/ very often prepared for exams by discussing or working through course material with other students

**44.9%**

of students often/ very often worked with other students on projects or assignments

## Student-Faculty Interaction 2021

**11.1%**

students often/ very often talked about career plans with academic staff

**7.4%**

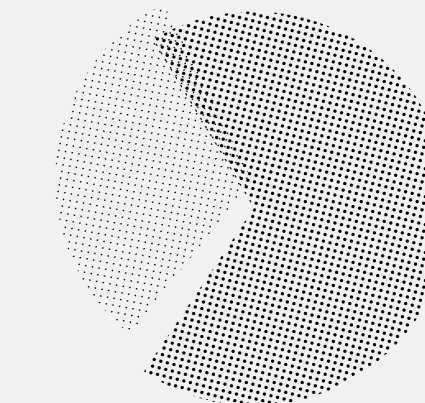
of students often/ very often worked with academic staff on activities other than coursework (committees, student groups, etc.)

**13.0%**

of students often/ very often discussed course topics, ideas, or concepts with academic staff outside of class

**12.9%**

of students often/ very often discussed their performance with academic staff



## Effective Teaching Practices 2021

**66.6%**

of students believed that lecturers/ teaching staff clearly explained course goals and requirements

**68.9%**

of students believed that lecturers/ teaching staff taught in an organised way

**67.5%**

of students believed that lecturers/ teaching staff used examples or illustrations to explain difficult points

**34.7%**

of students believed that lecturers/ teaching staff provided feedback on a draft or work in progress

**39.6%**

of students believed that lecturers/ teaching staff provided prompt and detailed feedback on tests or completed assignments



### Quality of Interactions 2021

**29.6%**

of students indicated as excellent (6/7 or 7/7) the quality of interactions with students

**20.2%**

of students indicated as excellent (6/7 or 7/7) the quality of interactions with academic advisors

**29.1%**

of students indicated as excellent (6/7 or 7/7) the quality of interactions with academic staff

**22.1%**

of students indicated as excellent (6/7 or 7/7) the quality of interactions with support services staff (career services, student activities, accommodation, etc.)

**25.6%**

of students indicated as excellent (6/7 or 7/7) the quality of interactions with other administrative staff and offices (registry, finance, etc.)

### Supportive Environment 2021

**55.3%**

of students believed that their institution emphasised quite a bit/ very much providing support to help students succeed academically

**50.7%**

of students believed that their institution emphasised quite a bit/ very much using learning support services (learning centre, computer centre, maths support, writing support, etc.)

**32.2%**

of students believed that their institution emphasised quite a bit/ very much contact among students from different backgrounds (social, racial/ ethnic, religious, etc.)

**37.1%**

of students believed that their institution emphasised quite a bit/ very much providing opportunities to be involved socially

**46.5%**

of students believed that their institution emphasised quite a bit/ very much providing support for their overall well-being (recreation, health care, counselling, etc.)

**20.0%**

of students believed that their institution emphasised quite a bit/ very much helping them manage their non-academic responsibilities (work, family, etc.)

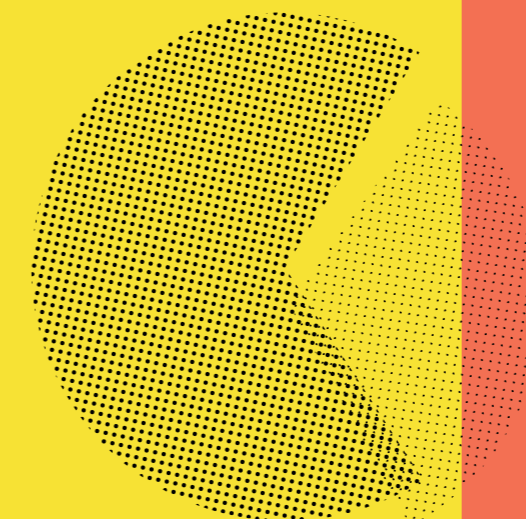
### Supportive Environment 2021 (cont.)

**29.8%**

of students believed that their institution emphasised quite a bit/ very much attending campus activities and events (special speakers, cultural performances, sporting events, etc.)

**27.9%**

of students believed that their institution emphasised quite a bit/ very much attending events that address important social, economic, or political issues



### Non-Indicator items 2021

**48.9%**

of students often/ very often asked questions or contributed to discussions in class, tutorials, labs, or online

**21.0%**

of students often/ very often came to class without completing readings or assignments

**32.8%**

of students often/ very often made a presentation in class or online

**59.3%**

of students often/ very often improved knowledge and skills that will contribute to their employability

**40.1%**

of students often/ very often explored how to apply their learning in the workplace

**41.0%**

of students often/ very often exercised or participated in physical fitness activities

**30.2%**

of students often/ very often blended academic learning with workplace experience

**38.7%**

of students often/ very often worked on assessments that informed them how well they were learning

**41.9%**

of students often/ very often memorised course material

**37.6%**

of students plan to do/ have done/ were in process of working with academic staff on a research project

**41.1%**

of students plan to do/ have done/ were in process of doing community service or volunteer work

### Non-Indicator items 2021

**62.7%**

of students believed that their institution emphasised quite a bit/ very much spending significant amounts of time studying and on academic work

**60.0%**

of students believed that their experience at their institution contributed to their knowledge, skills, and personal development quite a bit/ very much in writing clearly and effectively

**51.2%**

of students believed that their experience at their institution contributed to their knowledge, skills, and personal development quite a bit/ very much in speaking clearly and effectively

**71.8%**

of students believed that their experience at their institution contributed to their knowledge, skills, and personal development quite a bit/ very much in thinking critically and analytically

**46.7%**

of students believed that their experience at their institution contributed to their knowledge, skills, and personal development quite a bit/ very much in analysing numerical and statistical information

**56.4%**

of students believed that their experience at their institution contributed to their knowledge, skills, and personal development quite a bit/ very much in acquiring job- or work-related knowledge and skills

**59.1%**

of students believed that their experience at their institution contributed to their knowledge, skills, and personal development quite a bit/ very much in working effectively with others

**50.1%**

of students believed that their experience at their institution contributed to their knowledge, skills, and personal development quite a bit/ very much in solving complex real-world problem

**38.6%**

of students believed that their experience at their institution contributed to their knowledge, skills, and personal development quite a bit/ very much in being an informed and active citizen (societal/ political/ community)

**72.3%**

of students would evaluate their entire educational experience at their institution as good/ excellent

**86.1%**

of students, if they could start over again, would probably/ definitely go to the same institution they are now attending

